

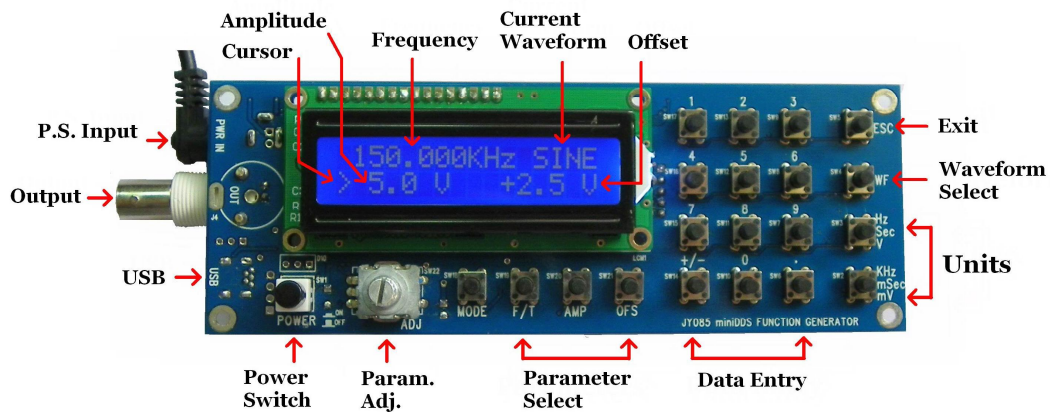
FG085 miniDDS Function Generator

Quick Reference

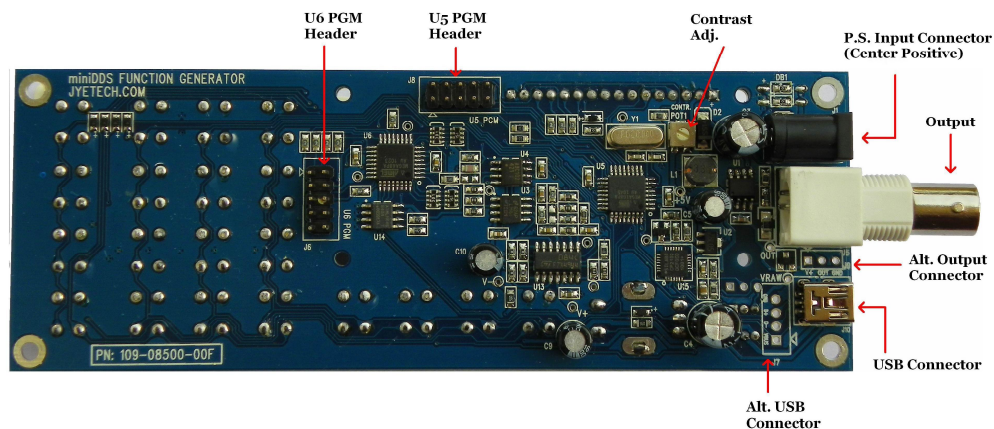
Applicable Models: 08501, 08501K

Note: Please visit www.jytech.com to download detailed documents

1. Panel Features and Connections



2. Connectors and Adjustments



3. Operations

- **To set output frequency, amplitude, or offset**
Press {[F/T], [AMP], or [OFS]} + {Data Entry Keys} + {Unit Key}
- **To select output waveform**
Press [WF] key
- **To change parameter continuously**
Use [F/T], [AMP], or [OFS] to move cursor to parameter to be changed then turn parameter adjustment dial.

4. Power Supply Requirement

- 1) Voltage range: DC 15V +/- 10%
- 2) Current capacity: > 200mA
- 3) Connection: positive pole must be connected to the central conductor of power input connector (J1). **There is no reverse protection!**

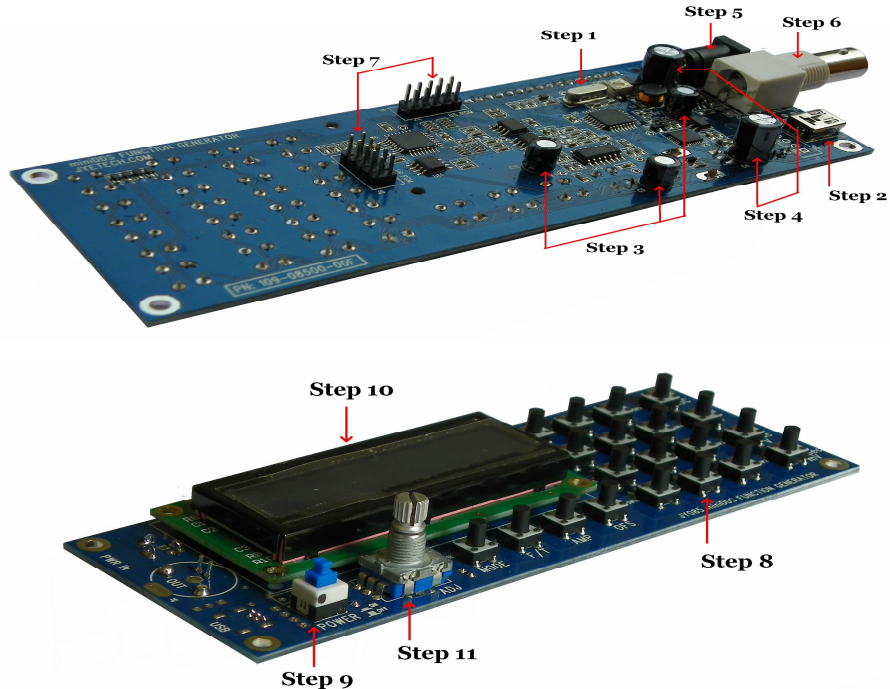
5. Kit Contents (Applicable to model 08501K)

| Assembly Order | Part Descriptions | Designator | Qty | Remarks |
|----------------|--|-------------|-----|----------|
| 1 | Crystal, 20MHz | Y1 | 1 | |
| 2 | Connector, USB mini-B | J10 | 1 | |
| 3 | E-cap, 100uF/16V, aluminium | C5, C9, C10 | 3 | |
| 4 | E-cap, 470uF/25V, aluminium | C3, C4 | 2 | |
| 5 | Connector, DC005 | J1 | 1 | |
| 6 | Connector, BNC right-angle | J5 | 1 | |
| 7 | Pin header, 5 X 2, 2.54mm | J6, J8 | 2 | |
| 8 | Switch, tact, 6 X 6 X 9 | SW2 – SW21 | 20 | |
| 9 | Switch, lockable, DPDT | SW1 | 1 | (Note 1) |
| 10 | Pin header, 16 X 1, 2.54mm | | 1 | (Note 1) |
| | LCD, 1602A, blue | LCD1 | 1 | |
| 11 | Switch, rotary encoder, w/ pushbutton | SW22 | 1 | |
| | PCB, SMD parts pre-soldered | | 1 | |
| | Power adapter, AC/DC, 15V0.5A | | 1 | |
| | Switch cap | | 1 | For SW1 |

Note 1: See the **Assembly Guide** for detailed installation instructions.

6. Assembly Order (Applicable to model 08501K)

Important Note: You must read the *Assembly Guide* before assembling the kit!



7. In Case You Have Questions or Need Help

- For technical support – write to support@jyetechnology.com or post to forum.jyetechnology.com.
- For general inquiry – jyetechnology@gmail.com
- To place order – sales@jyetechnology.com