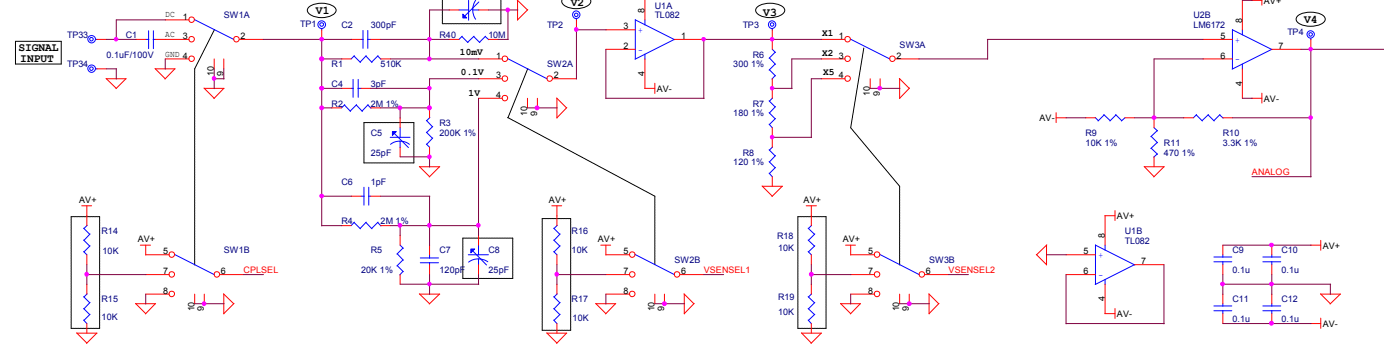
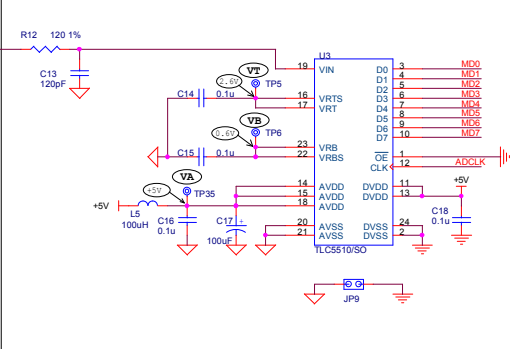


**ANALOG CHANNEL**



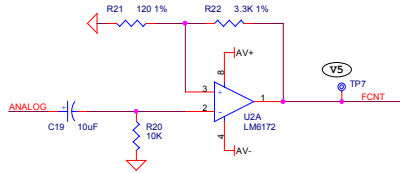
**A/D CONVERTER**



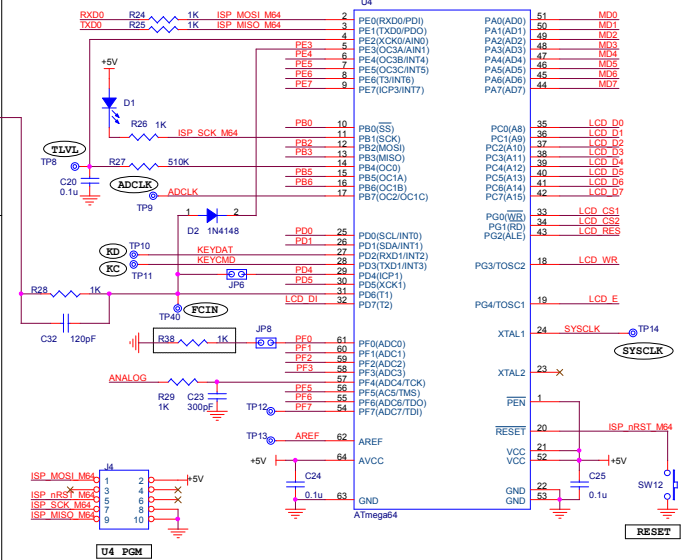
**CHANGES MADE TO VERSION I :**

1. THE CRYSTAL OSCILLATOR WAS CHANGED TO U5 FROM U4 FOR BETTER RELIABILITY.
2. THE BEEPER CIRCUIT WAS OMITTED.

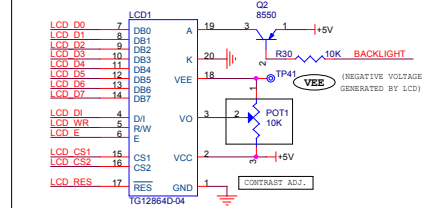
**SCHMITT TRIGGER**



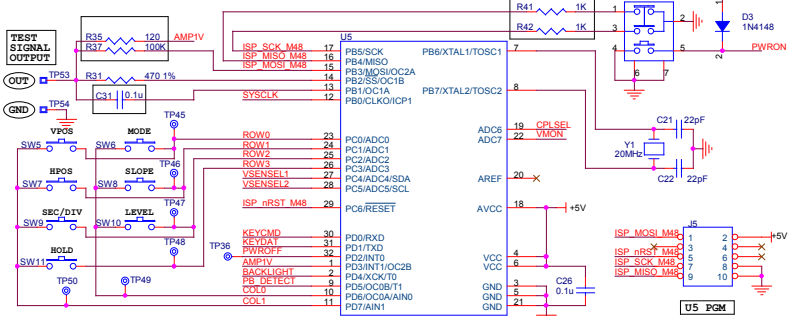
**MCU**



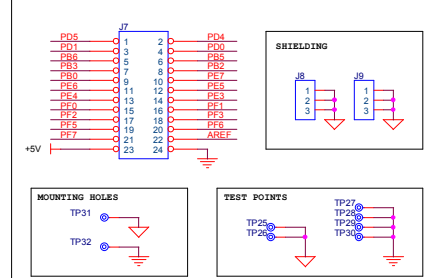
**LCD**



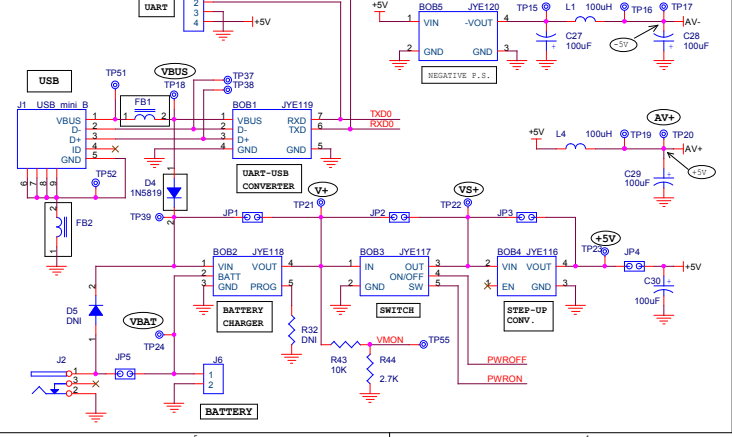
**KEY PAD & ROTARY ENCODER**



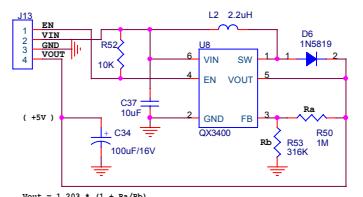
**MISC**



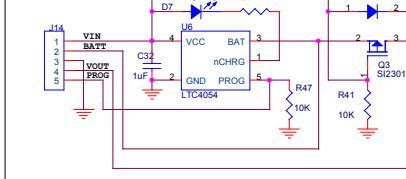
**POWER SUPPLY & USB**



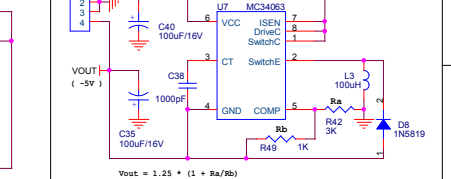
**STEP-UP CONV. (JYE116)**



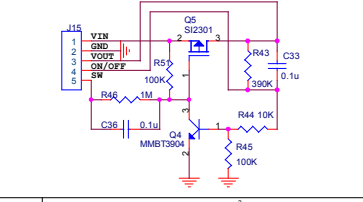
**BATTERY CHARGER (JYE118)**



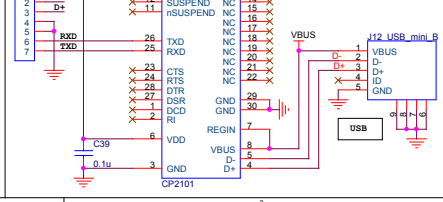
**NEGATIVE P.S. (JYE120)**



**SWITCH (JYE117)**



**UART-USB CONV. (JYE119)**



**DSO 068 (Rev. I)**

NOTES: 1. "DNI" = DO NOT INSTALL  
2. ACTUAL PART VALUE MAY DIFFER. PLEASE REFER TO PART LIST.

SUPPORT: [www.jyetechn.com/forum/](http://www.jyetechn.com/forum/)  
**JYE Tech Ltd.**  
[WWW.JYTECH.COM](http://WWW.JYTECH.COM)  
 jyetek@gmail.com