

How to Convert M162 to M162-10

M162-10 shares the same PCBs as M162. Only the values of some parts and the firmware are different. So an M162 can be converted to M162-10 by replacing the different parts and the firmware.

Replacing the components

The parts need to be replaced are given in the table below. Replace these parts with the new values listed in the table. Please note that the capacitors are SMD parts. The resistor R23 is a through-hole component in the kit version M162, but a SMD component in the assembled version.

Component Designator	Original Value	New Value	Package
C19	0.01 μ F	2200pF	SMD 0603
C20	0.01 μ F	2200pF	SMD 0603
C21	0.01 μ F	2200pF	SMD 0603
R23	6.2K	51K	Through-hole / SMD

Fig. 1 shows the locations of these parts in the kit version PCB (Part number 109-16201-00F).

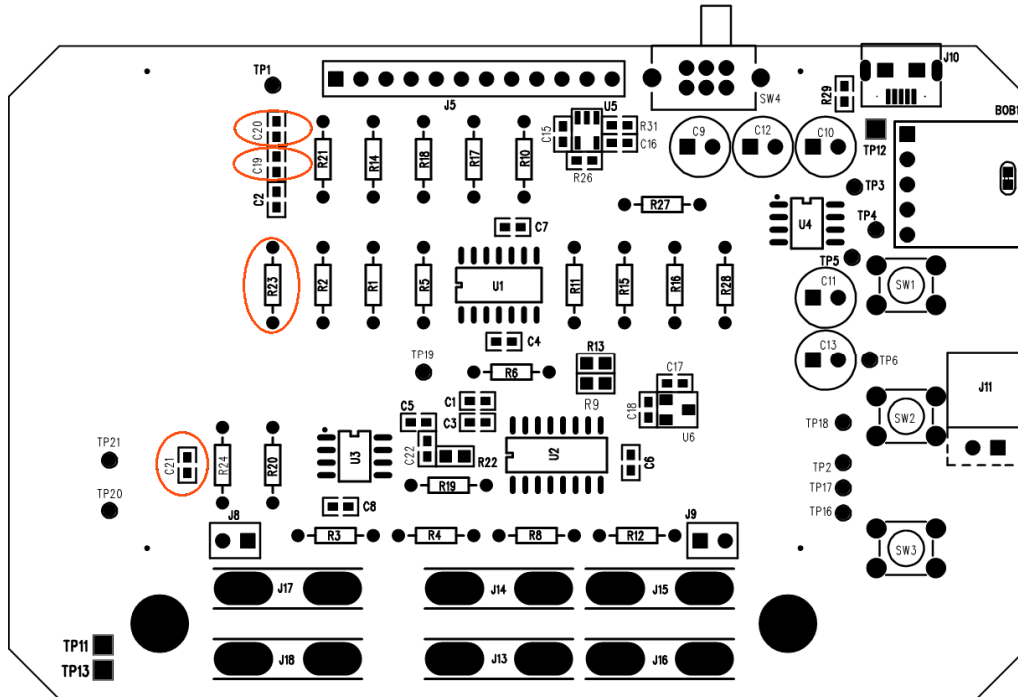


图 1

Fig. 2 shows the locations of these parts in the assembled version PCB (Part number 109-16206-00B).

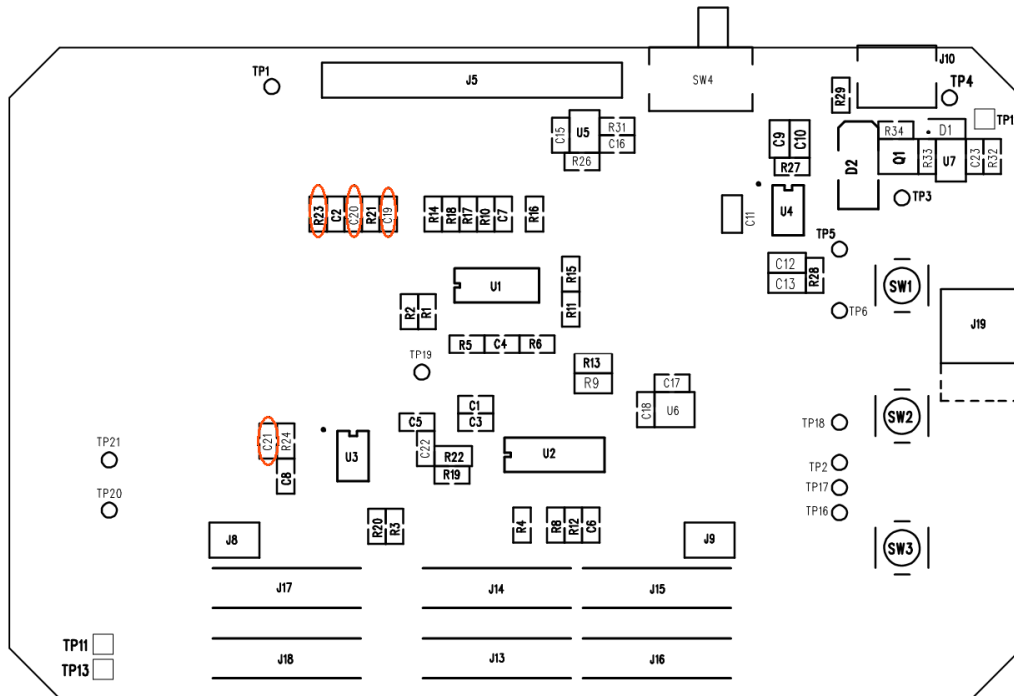


图 2

Replacing the firmware

The firmware for M162-10 can be downloaded at the following webpage:

<https://jyotech.com/m162-10-firmware/>

For how to change firmware please refer to the user manual of M162..